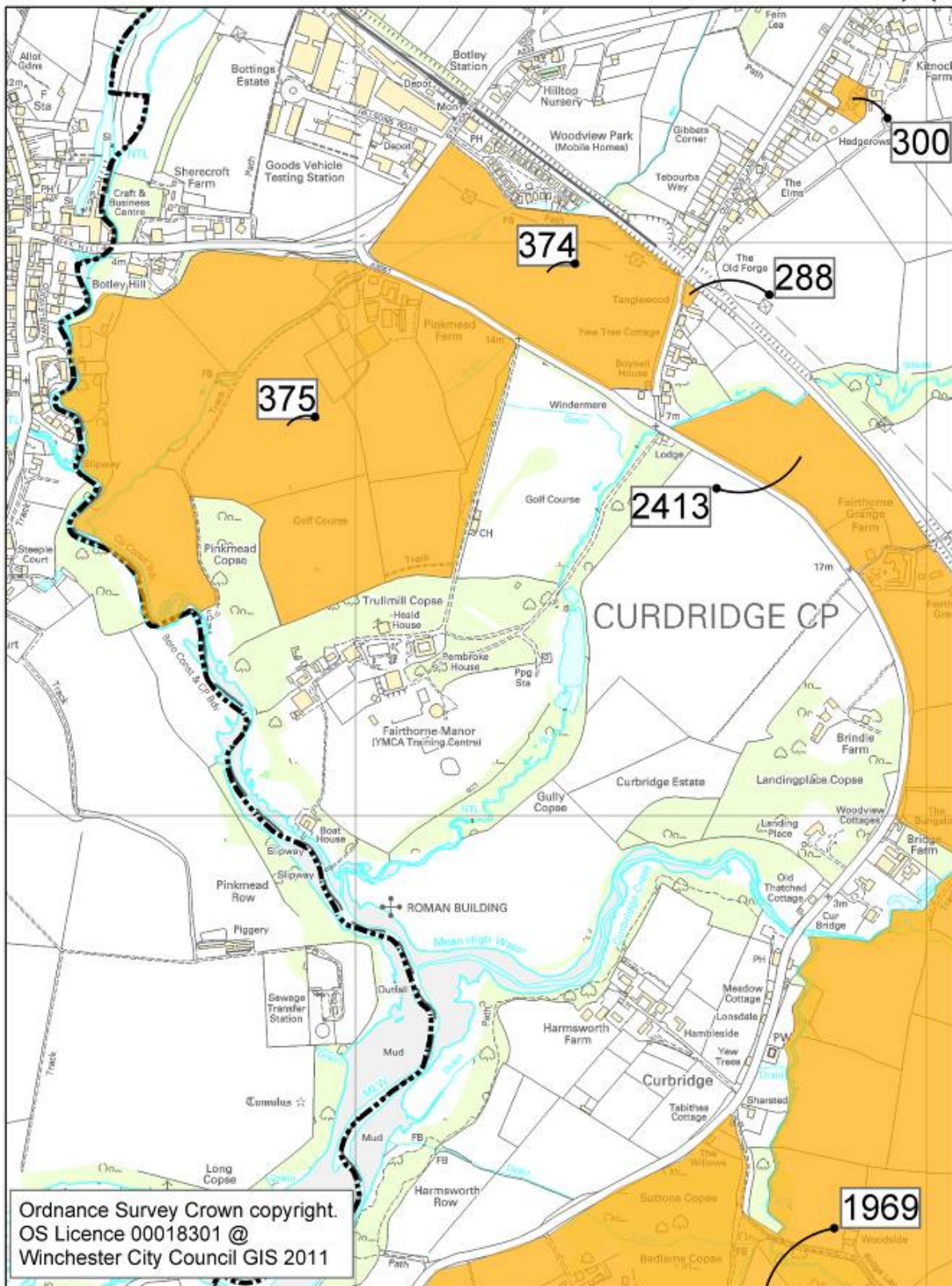


OTHER SETTLEMENTS

- Sites within Settlement Boundaries (Policy H3)
- Sites within the Countryside
- Settlement_Boundaries

Botley and Curbridge 1

N

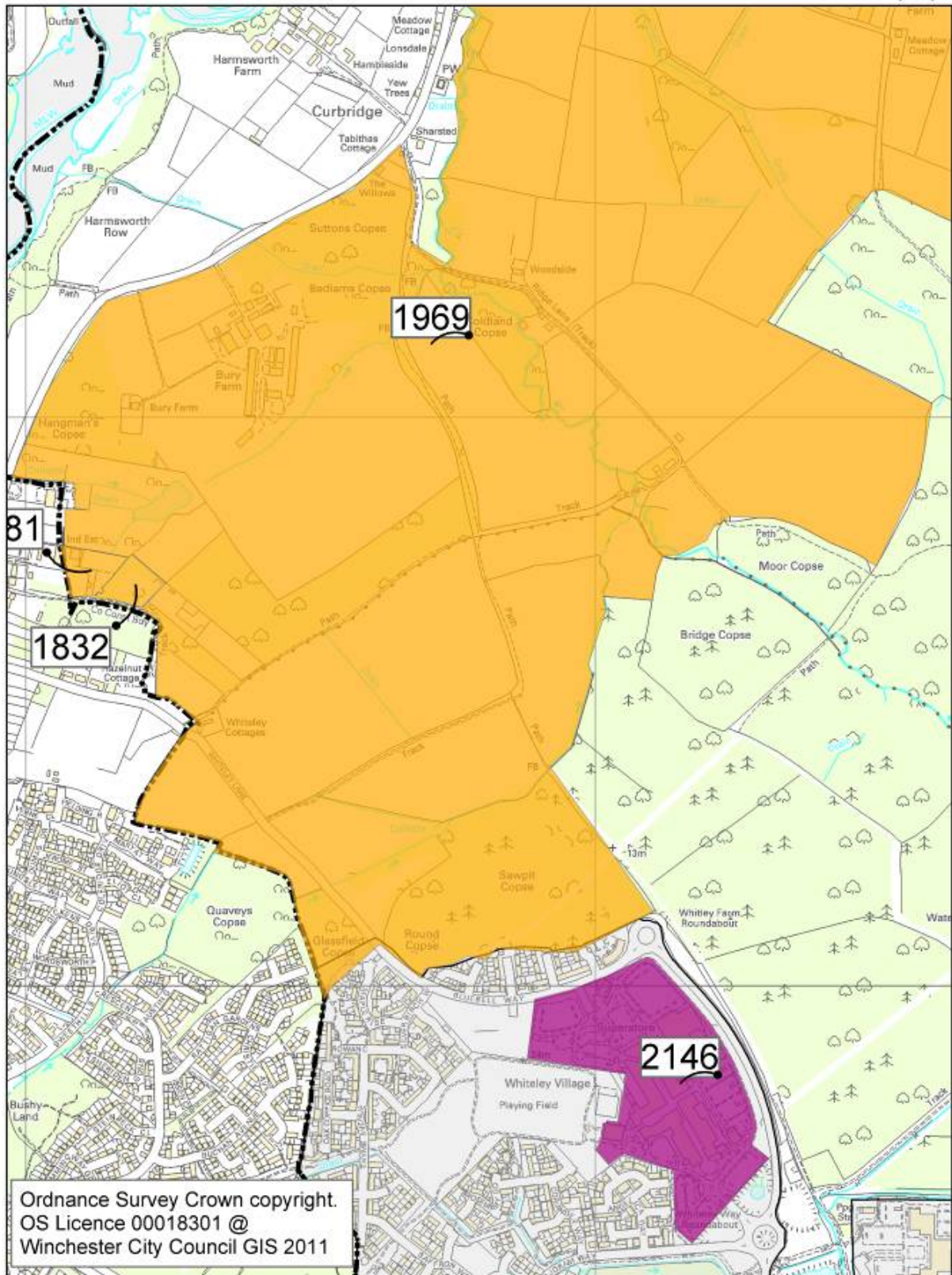


MAP 46 – BOTLEY AND CURBRIDGE 1

MAP 47 – CURBRIDGE 2 AND WHITELEY NORTH

-  Sites within Settlement Boundaries (Policy H3)
-  Sites within the Countryside
-  Settlement_Boundaries

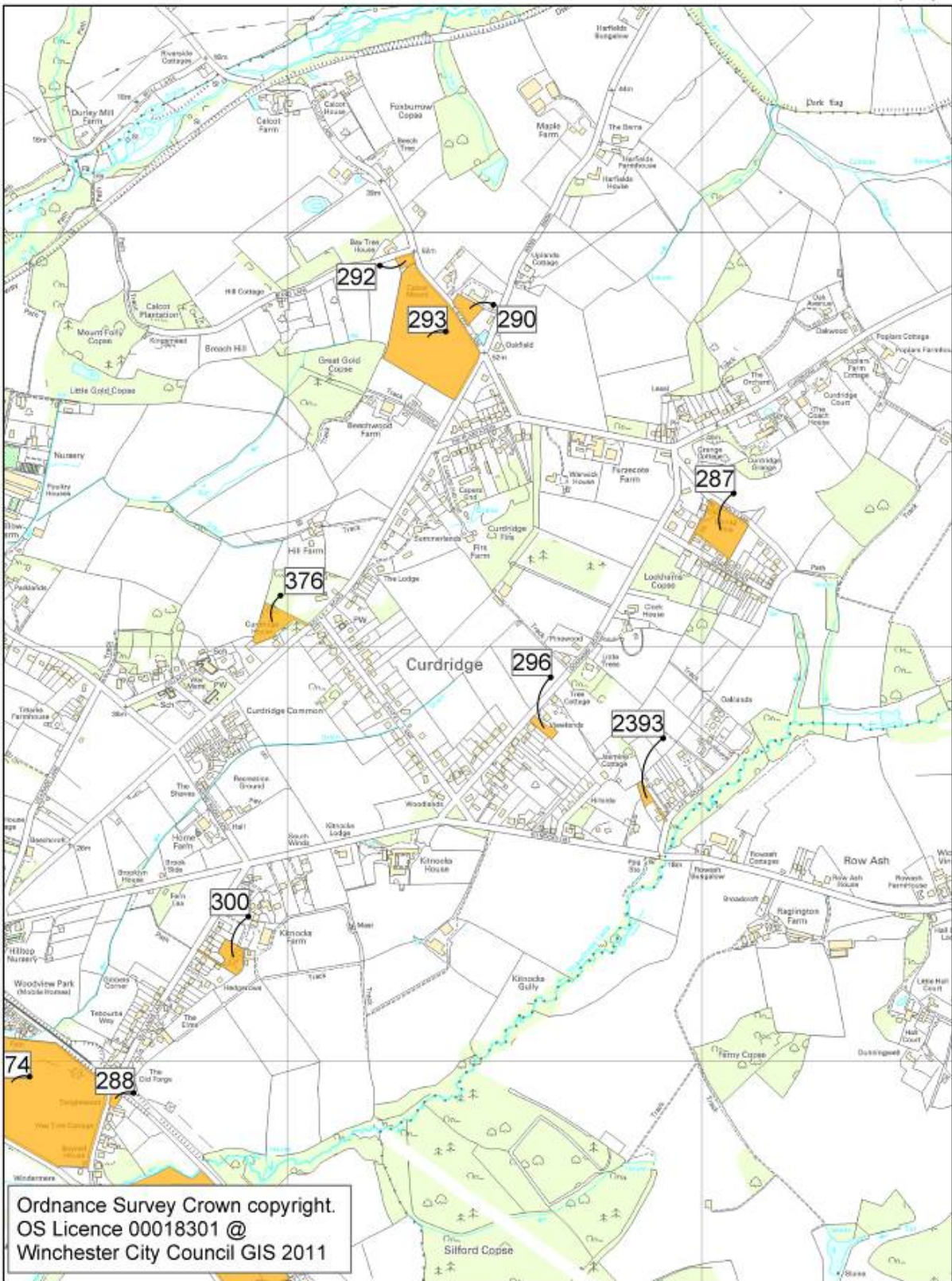
Curbridge 2 and Whiteley North



MAP 48 – CURDRIDGE

- Sites within Settlement Boundaries (Policy H3)
- Sites within the Countryside
- Settlement_Boundaries

Curdrige

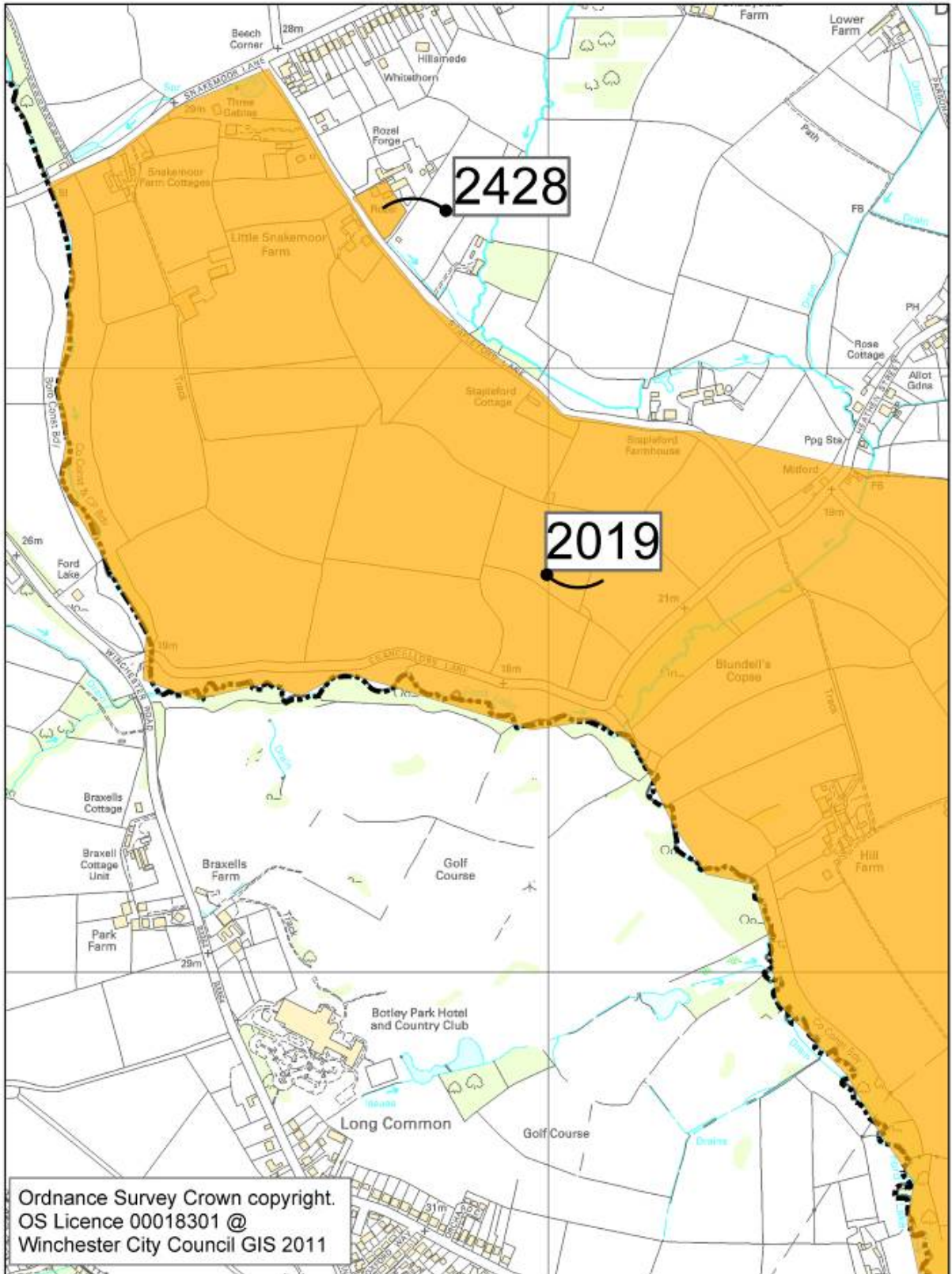


Ordnance Survey Crown copyright.
 OS Licence 00018301 @
 Winchester City Council GIS 2011

MAP 49 – DURLEY AND HEDGE END 1 (HEDGE END AREA OF SEARCH)

- Sites within Settlement Boundaries (Policy H3)
- Sites within the Countryside
- Settlement_Boundaries

Durley and Hedge End 1

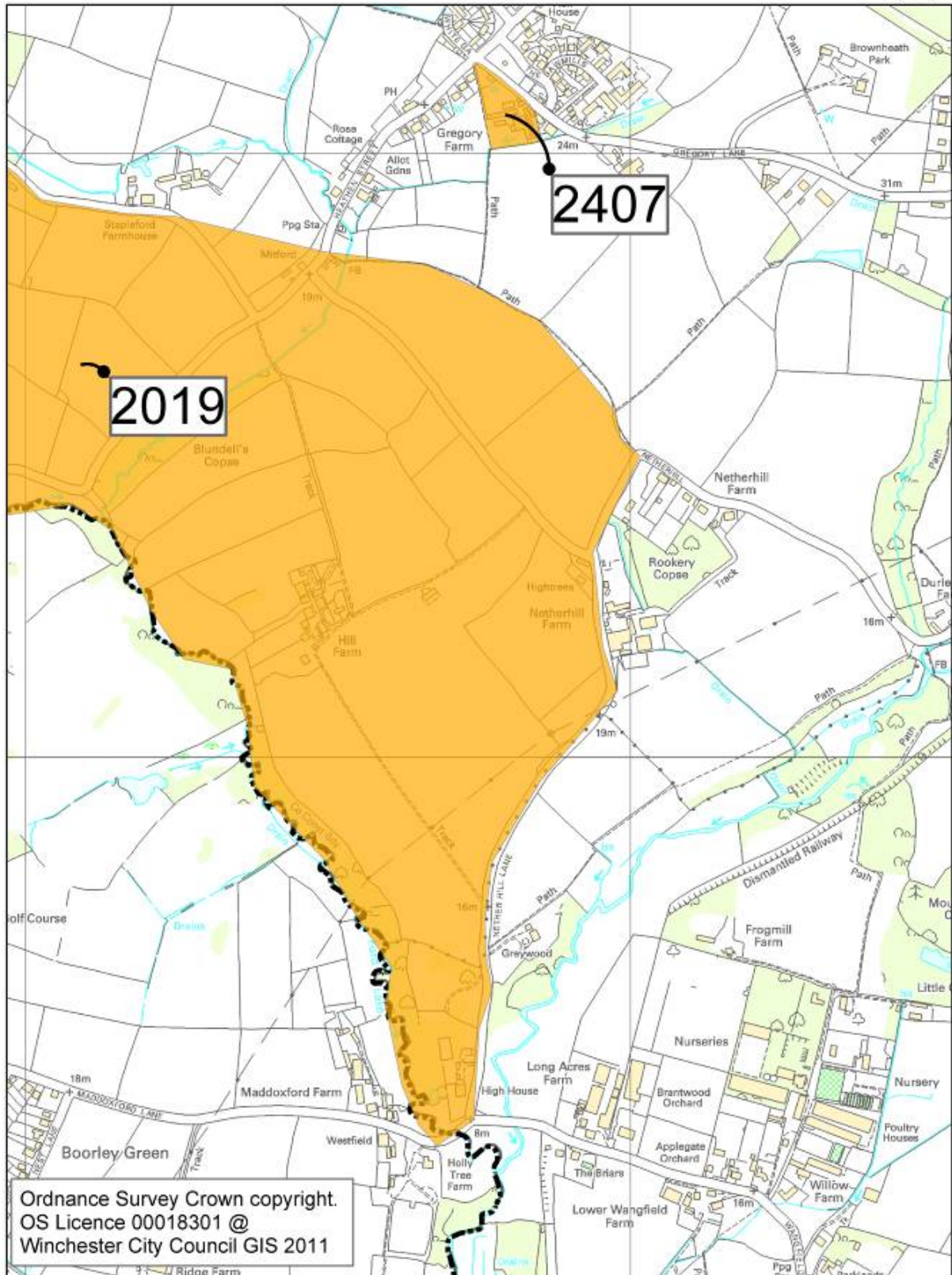


Ordnance Survey Crown copyright.
 OS Licence 00018301 @
 Winchester City Council GIS 2011

MAP 50 – DURLEY AND HEDGE END 2(HEDGE END AREA OF SEARCH)

- Sites within Settlement Boundaries (Policy H3)
- Sites within the Countryside
- Settlement_Boundaries

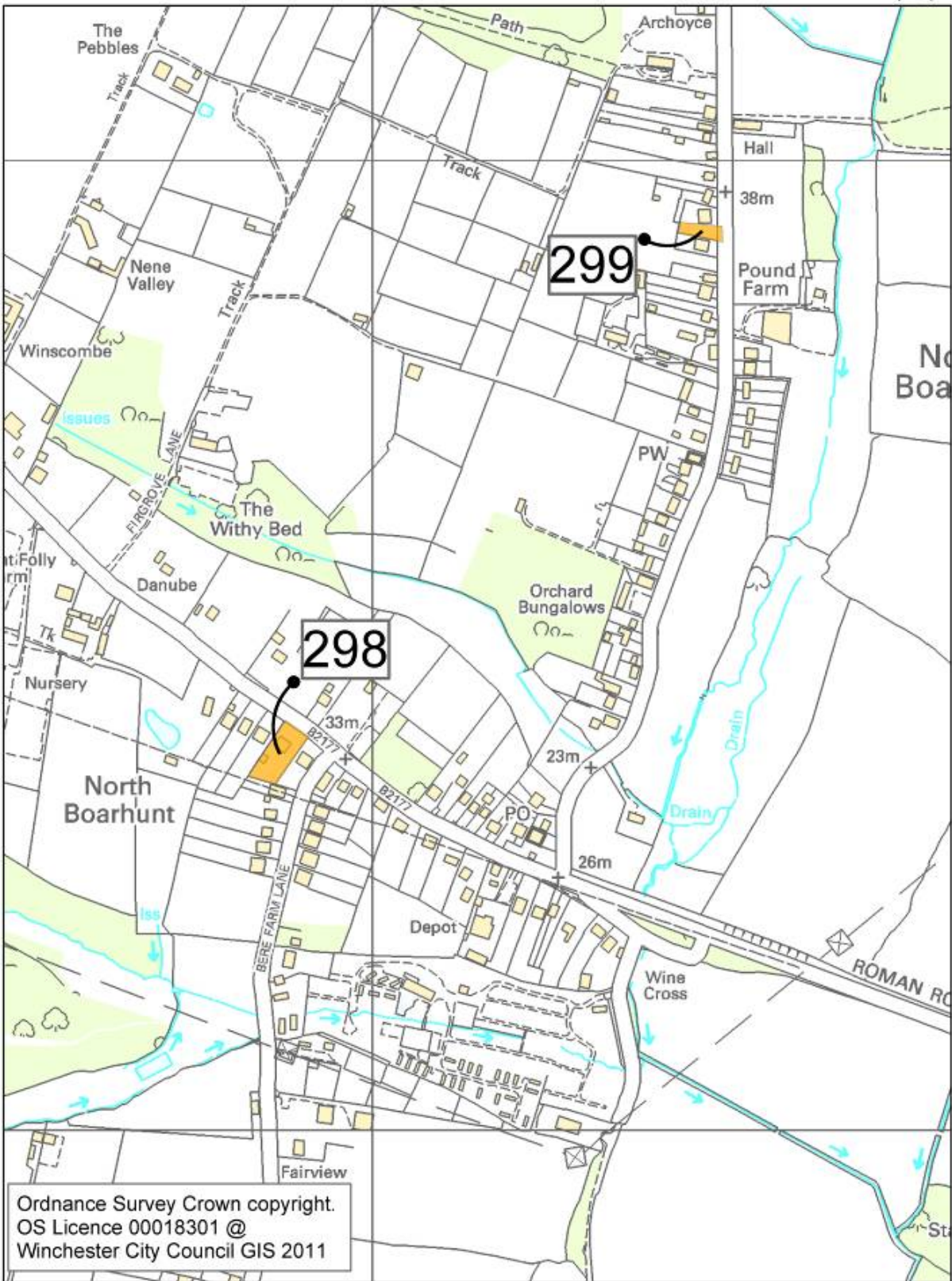
Durley and Hedge End 2



MAP 51 – NORTH BOARHUNT

- Sites within Settlement Boundaries (Policy H3)
- Sites within the Countryside
- Settlement_Boundaries

North Boarhunt



Ordnance Survey Crown copyright.
 OS Licence 00018301 @
 Winchester City Council GIS 2011

MAP 52 – PURBROOK

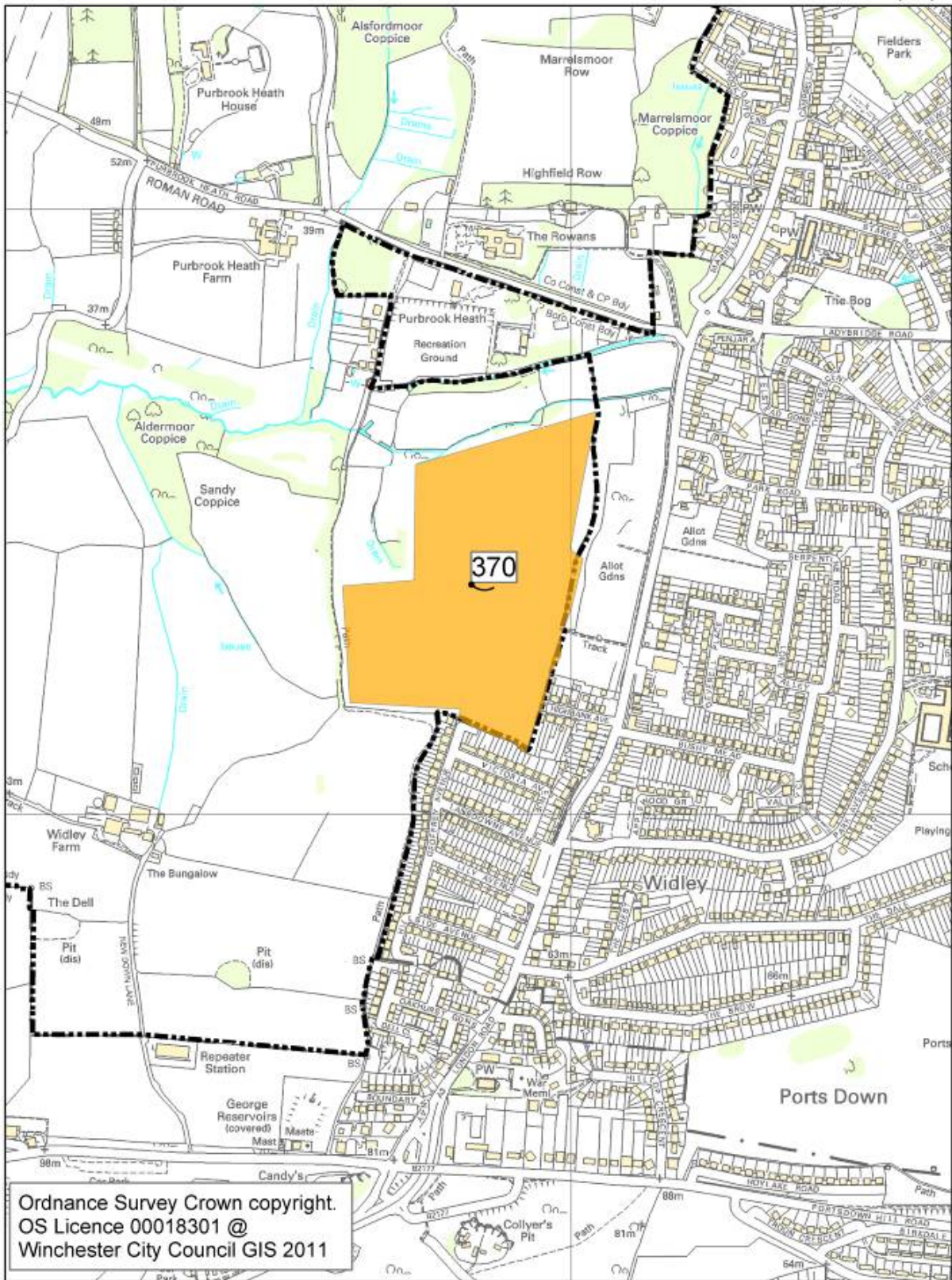
 Sites within Settlement Boundaries (Policy H3)

 Sites within the Countryside

 Settlement_Boundaries

Purbrook

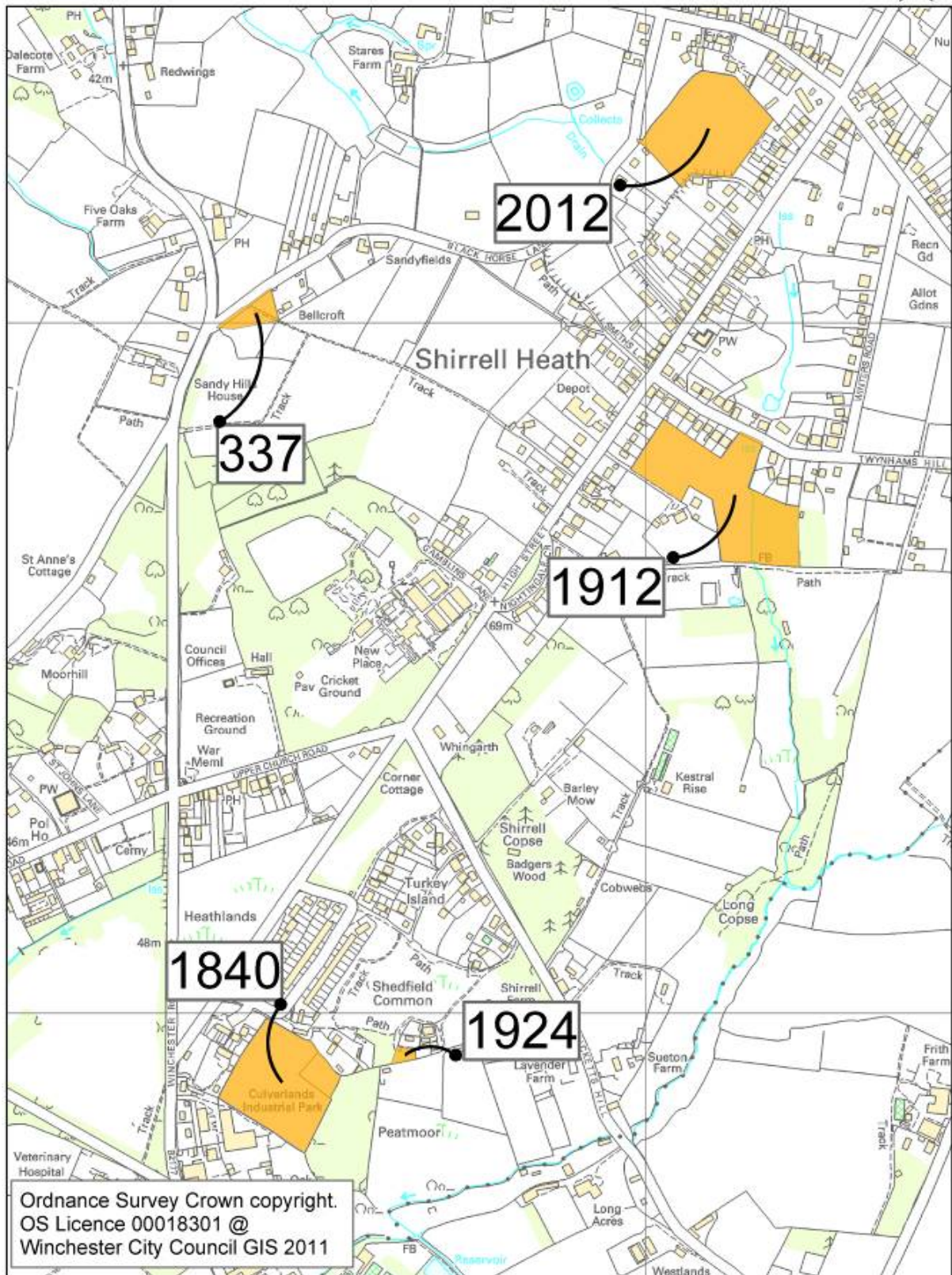
N



Ordnance Survey Crown copyright.
OS Licence 00018301 @
Winchester City Council GIS 2011

- Sites within Settlement Boundaries (Policy H3)
- Sites within the Countryside
- Settlement_Boundaries

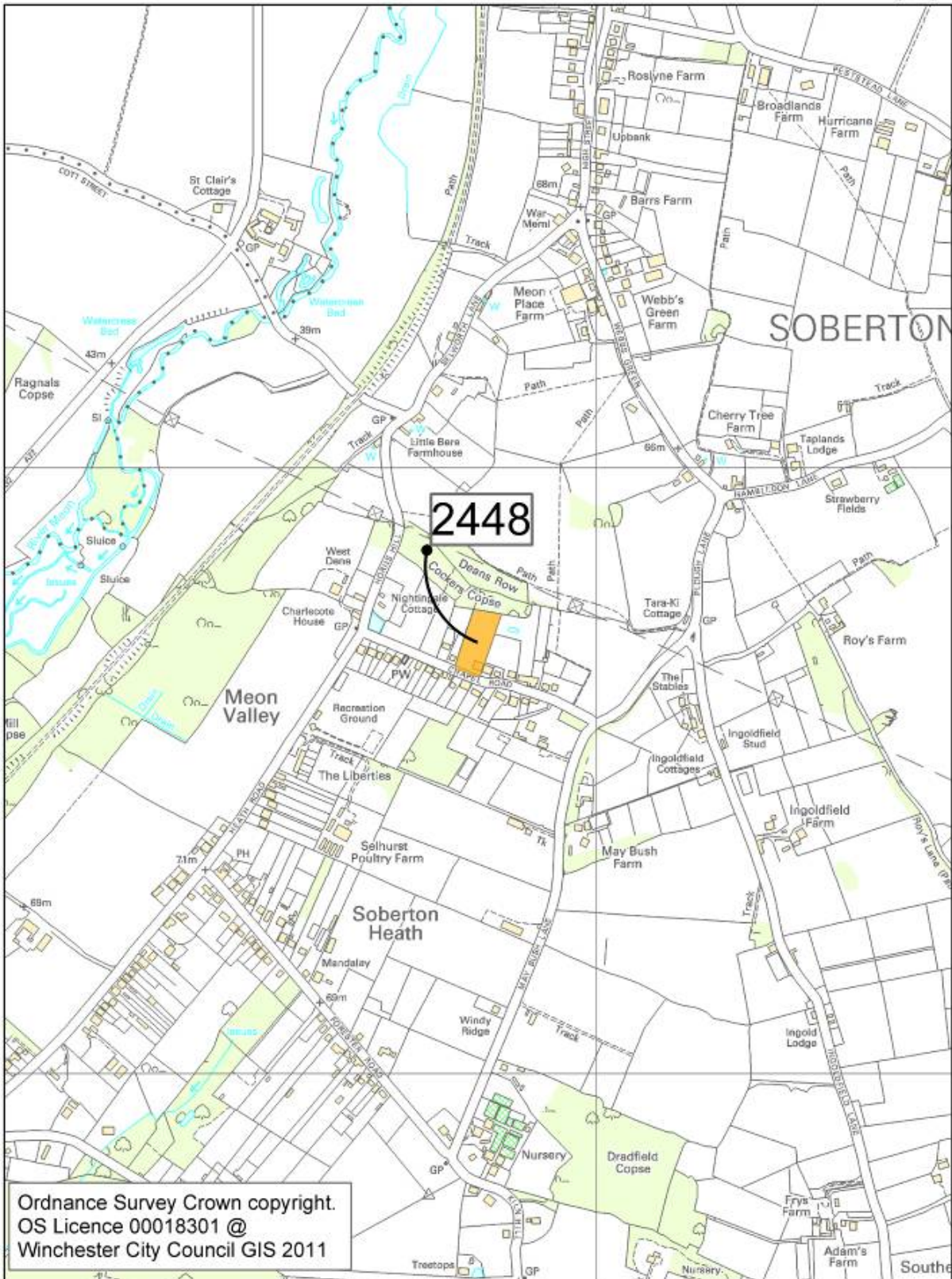
Shedfield and Shirrell Heath



MAP 53- SHEDFIELD AND SHIRRELL HEATH

- Sites within Settlement Boundaries (Policy H3)
- Sites within the Countryside
- Settlement_Boundaries

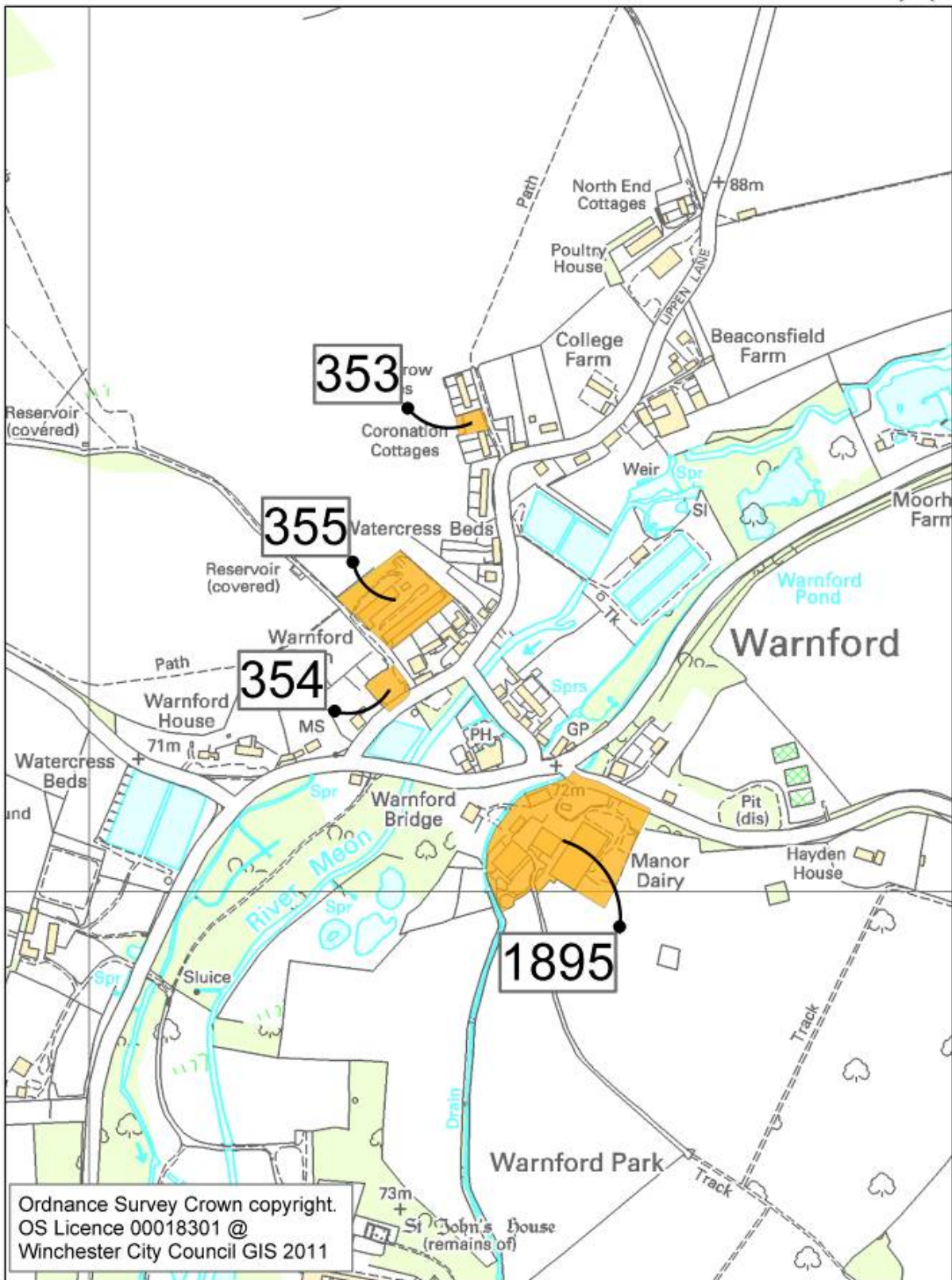
Soberton Heath



MAP 54 – SOBERTON HEATH

- Sites within Settlement Boundaries (Policy H3)
- Sites within the Countryside
- Settlement_Boundaries

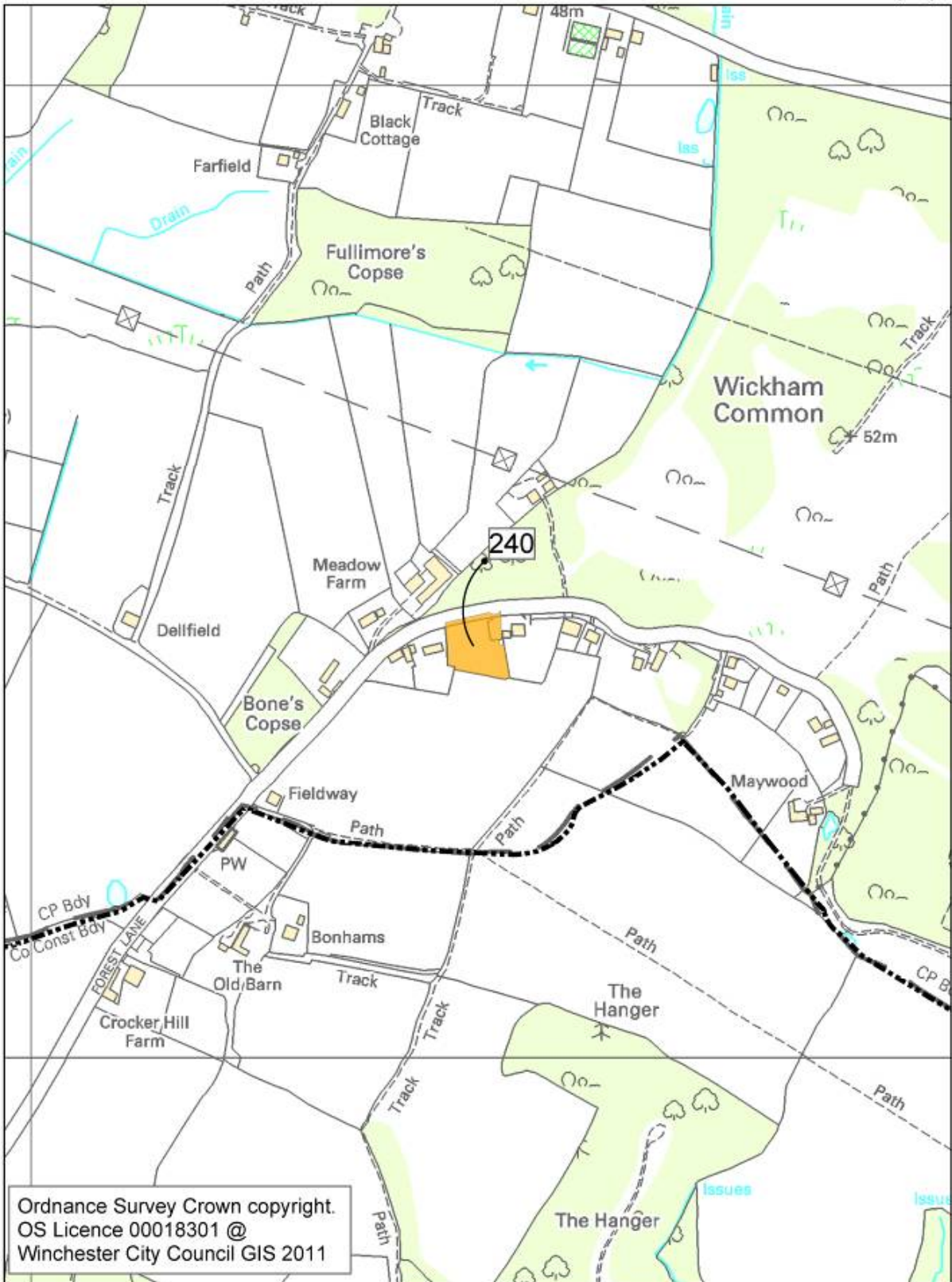
Warnford



MAP 55 – WARNFORD

- Sites within Settlement Boundaries (Policy H3)
- Sites within the Countryside
- Settlement_Boundaries

Wickham Common



Ordnance Survey Crown copyright.
 OS Licence 00018301 @
 Winchester City Council GIS 2011

MAP 56 – WICKHAM COMMON